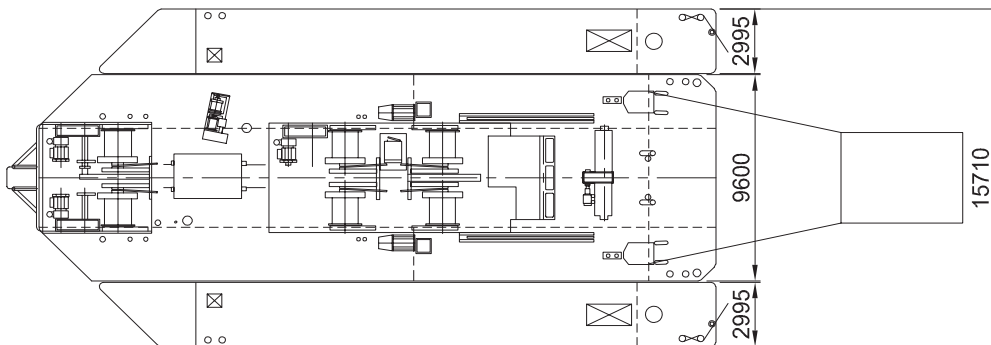
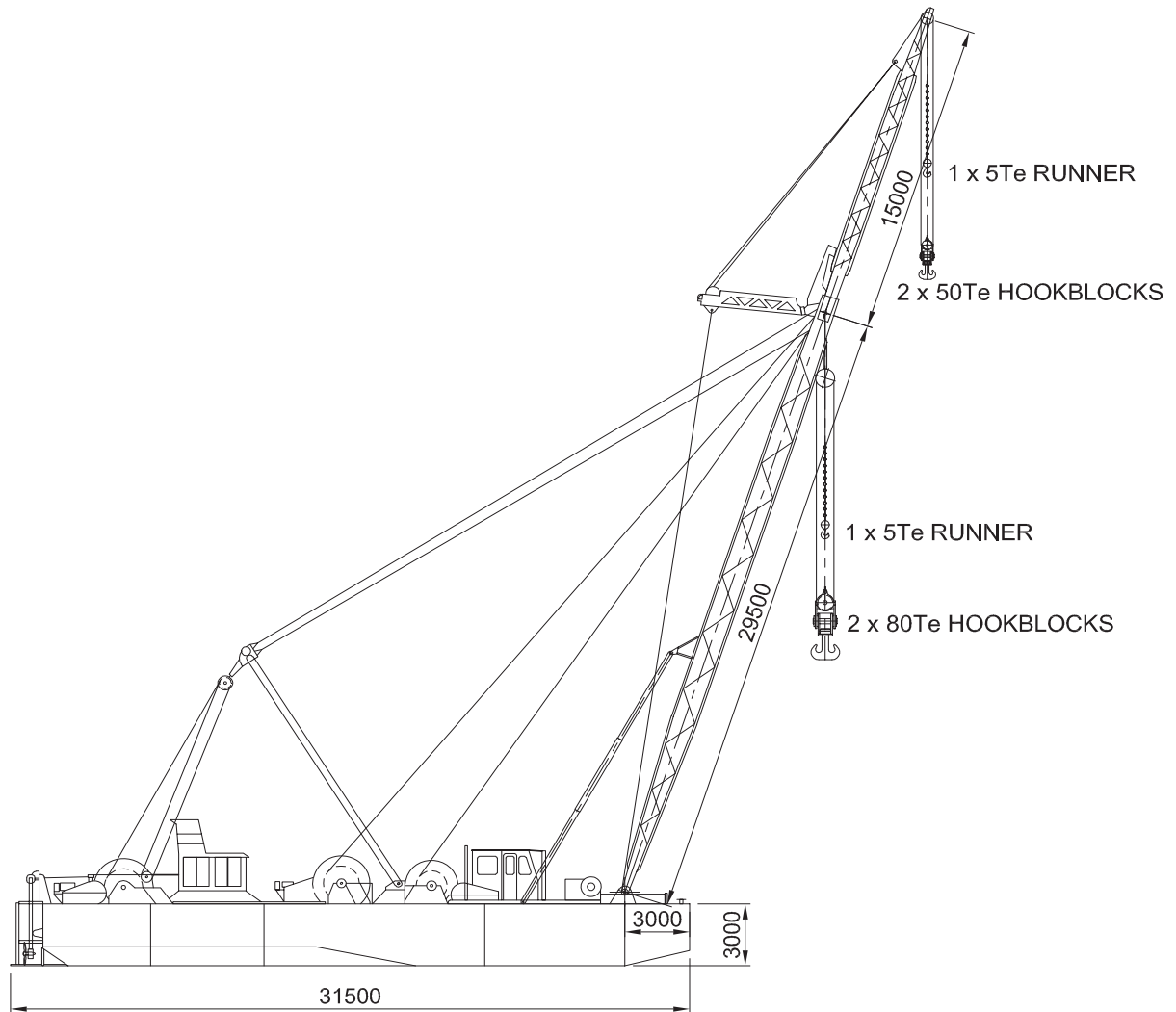
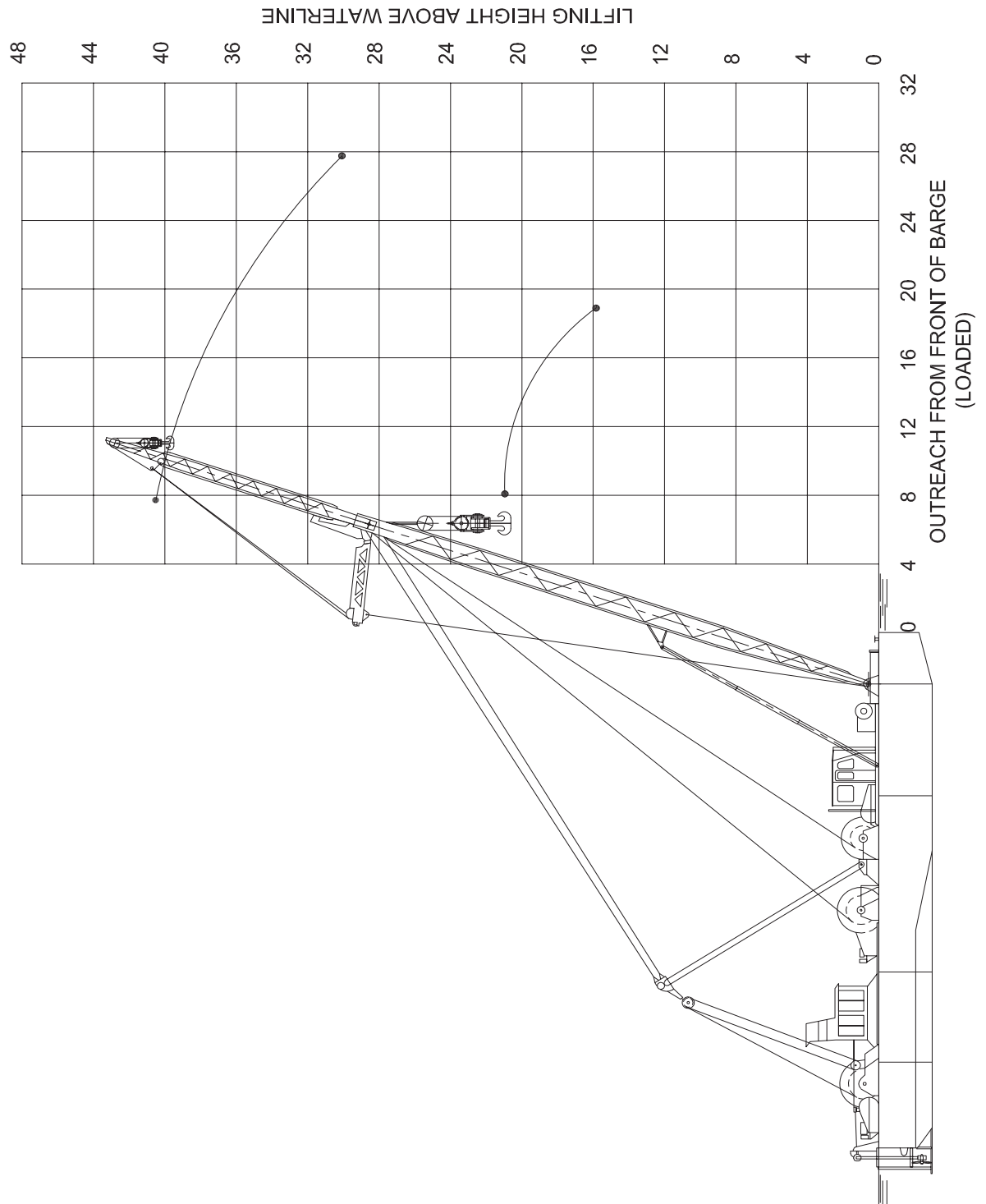




Seagoing floating sheerlegs	
Specifications	"PHOENIX"
Length	31500
Length (incl. hookpontoons behind main pontoon)	32600
Breadth working (incl. side pontoons)	15600
Breadth sailing (excl. side pontoons)	9600
Max. draught (ballast tanks filled + max. load)	2800
Airdraught sheerlegs and flyjib laid down forward on pontoon	6650
Airdraught sheerlegs and flyjib laid down forward on pontoon (ballasttanks filled)	4000
Gross tonnage	433
Max. capacity mainblock	2x80
Max. capacity fly-jib	2x50
Meetbriefnumber	G215N
Europeanumber	2204549
Flag	Dutch
• Propulsion: 275hp schottelnavigator	







SHEERLEGS - PHOENIX (SH/SF)

Mainboom		
Max. load	Outreach	Lifting height
160	9.24	20.67
155	9.89	20.29
150	10.57	20.17
145	11.29	20.06
140	12.03	19.95
135	12.82	19.83
130	13.65	19.71
125	14.32	19.59
120	14.54	19.47
115	14.77	19.35
110	14.99	19.22
105	15.48	18.87
100	15.96	18.51
95	16.44	18.03
90	16.92	17.74
85	17.39	17.33
80	17.87	16.9
75	18.34	16.46
70	18.81	15.99
65	19.28	15.49
60	19.75	14.97

Mainboom with fixed jib (0°)		
Max. load	Outreach	Lifting height
100	9.97	40.23
95	11.41	39.79
90	12.82	39.31
85	14.2	38.79
80	15.56	38.22
75	17.21	37.46
70	18.21	36.98
65	19.66	36.19
60	21.1	35.35
55	22.51	34.44
50	23.91	33.46
45	25.6	32.41
40	26.67	31.27
35	28.04	30.04
30	29.4	28.69

Load lifted by mainboom + fixed jib (0°) *				
Max. load	Mean outreach	Lifting height	Draught bow	Draught stern
130	5.72	24.39	2.31	1.57
125	6.58	24.08	2.33	1.52
120	7.42	23.76	2.35	1.47
115	8.25	23.42	2.36	1.44
110	9.07	23.06	2.37	1.41
105	9.87	22.68	2.37	1.38
100	10.65	22.29	2.36	1.37
95	11.43	21.87	2.35	1.36
90	12.2	21.44	2.33	1.35
85	12.95	20.98	2.3	1.36
80	13.69	20.5	2.27	1.36
75	14.43	20	2.24	1.38
70	15.16	19.47	2.2	1.4
65	15.88	18.91	2.16	1.42
60	16.6	18.32	2.11	1.45
55	17.31	17.69	2.06	1.49
50	18.02	17.02	2	1.53
45	18.72	16.31	1.94	1.57

* Note:

- Load equally divided over mainboom and jib
- Before lifting be sure the ballasttanks are filled completely and the pontoon is not heeling over.

